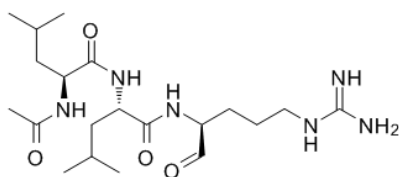


Product Name : Leupeptin hemisulfate
Cat. No. : PC-45438
CAS No. : 103476-89-7
Batch No. : PC-4543801
Chemical Name : L-Leucinamide, N-acetyl-L-leucyl-N-[(1S)-4-[(aminoiminomethyl)amino]-1-formylbutyl]-, sulfate (2:1)

PHYSICAL AND CHEMICAL PROPERTIES

Molecular Weight : 475.59
Molecular Formula : $C_{20}H_{38}N_6O_4 \cdot$
Storage : Powder -20°C 12 Months
4°C 6 Months
In solvent -80°C 6 Months
-20°C 1 Month

Chemical Structure :



0.5H₂SO₄

ANALYTICAL DATA

Appearance : Solid powder
¹H NMR Spectrum : Consistent with
HPLC : Consistent with
NP : Consistent with
Purity (HPLC and/or LCMS) : >98%
Conclusion : The product has been tested and complies with the given specifications.

Caution: Product has not been fully validated for medical applications. Lab Use Only!

E-mail: tech@probechem.com